



# ROUTINE JACK MAINTENANCE BULLETIN

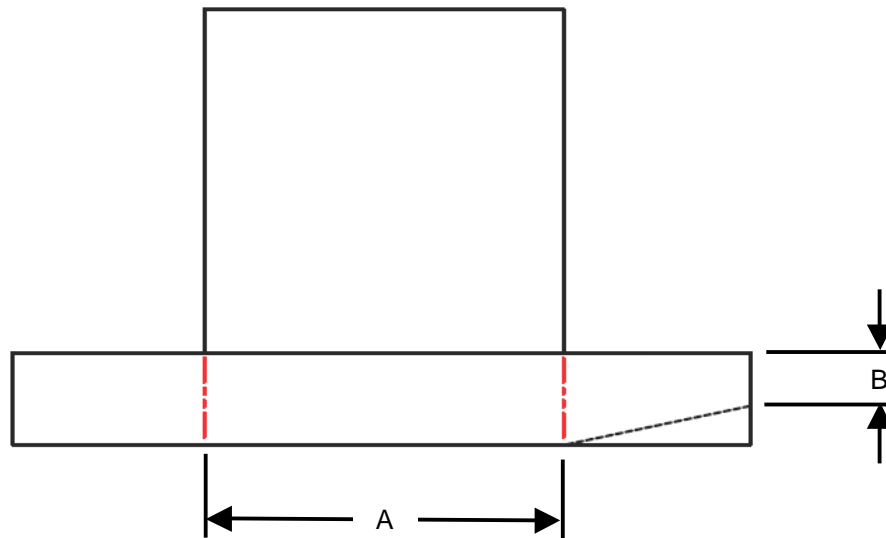
RJM 205

1 OF 1

**TO PROVIDE COMPLETE INFORMATION ON SERVICING  
ColumbusJACK/REGENT QUALITY GROUND HANDLING EQUIPMENT**

## WEAR LIMITS ON CYLINDER BASE OF ALLIGATOR STYLE AXLE JACKS

This Maintenance Bulletin is to be used as a reference guide only regarding the wear limits on a cylinder base of an alligator style axle jack that may have become damaged during towing. As the material of most bases is heat treated steel, building up of the base thickness through welding is not recommended.



The immediate area under the cylinder (A) must always be the full thickness of the base plate.

The minimum thickness (B) must never be less than 75% of the full thickness of the base plate.